

RATING	50 A	100 A	150 A
DC OUTPUT	24 / 48 / 110 / 220 V		

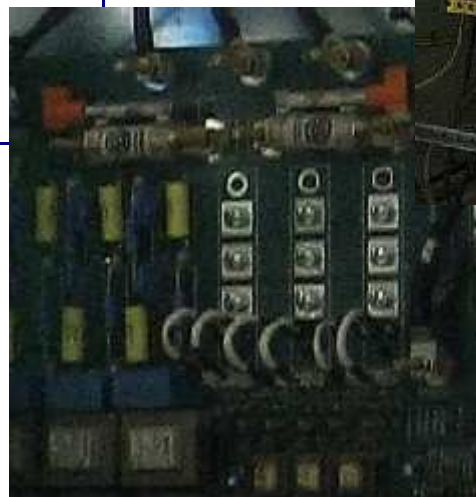
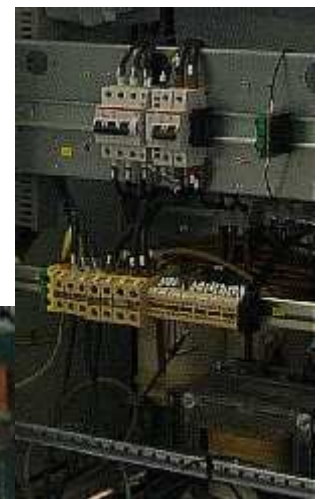
- Standard DC System Configuration
- Compact Design
- Cost Effective & Short Lead Time solutions
- Microprocessor Control
- 6-Pulse Thyristor bridge
- Suitable for charging Lead-acid or NiCd batteries
- Digital Control Panel w/ Graphic LCD, LEDs & Keypad
- Input automatic Circuit Breaker (thermal-magnetic release)
- Output Disconnecter switch
- Input insulation transformer
- EMI Filter on Input
- LC Smoothing filter on Output

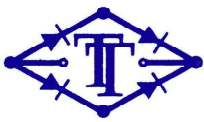
ALGPS.c Series

Compact Battery Charger Rectifier for Industrial applications

Options

- Battery automatic Circuit Breaker (thermal-magnetic release)
- Blocking Diode on Output for parallel operation
- Surge arresters on Input
- DC Earth Fault monitor with separate positive & negative signalisation
- Relay card with up to #24 remote signals
- Active load sharing $\leq 10\% I_n$ in parallel operation
- Fan monitor and alarm
- Base metal plate (with removable undrilled plate for installation on site)
- Temperature sensor (cable length=10m) for charging voltage compensation
- Communication Port: USB or RS485 or Ethernet TCP/IP with MODBUS Protocol
- DC Distribution Panel
- Dropping Diodes for Load voltage regulation
- Battery (with rack or cabinet)
- Other Input/Output voltages
- Other Cabinet IP/colour/dimensions
- Any other specification according to specific projects (contact us)





TELETECNICA S.r.l.

Electronic, electrotechnical and telecasting equipment

Sigillo (PG) - ITALIA



Technical Specifications

AC Input

Rated Voltage	400V AC 3Ph $\pm 10\%$
Frequency	50, 60 Hz $\pm 5\%$
THD	$\leq 30\%$ typ.
Protections	Under/Over voltage – Automatic Circuit Breaker

DC Output

Rated Voltage	24 / 48 / 110 / 220 VDC				
Charging Voltages		<i>VRLA</i>	<i>Vented LA</i>	<i>NiCd</i>	
	<i>Floating:</i>	2.23-2.27	2.20-2.30	1.40-1.50	V/c (adj.)
	<i>Boost:</i>	-	2.40-2.45	1.50-1.65	V/c (adj.)
	<i>Equalise:</i>	up to 2.35	up to 2.70	up to 1.70	V/c (adj.)
Charge Characteristic	"IU" according to DIN 41773				
Static Regulation	$\pm 1\%$				
Voltage Ripple	$\leq 1\%$ RMS				
Output Total current limit	20 ÷ 100 % I_n (adj.)				
Battery charging current	10 ÷ 100 % I_n (adj.)				
Protections	Under/Over voltage – Overload – Short circuit				

Control & Signalisation

Microprocessor	High Performance 8-Bit Microcontroller with Advanced RISC Architecture
LCD Panel	Backlit graphic LCD for Meters, Alarm/Status messages, History events & Parameters Settings
Signalling LED	Operation (green), Mains OK (green), Common minor alarm (red), Common major alarm (red)
Acoustic Signal	Buzzer
Volt free signalling contacts	Mains failure, Charger minor alarm, Charger major alarm, Battery low; relays COM/NO/NC

Environmental conditions

Installation	Indoor
Ambient Temperature	<i>Operation:</i> -10°C to +50°C, <i>Storage:</i> -25°C to +70°C
Relative Humidity	$\leq 95\%$ @ 40°C non condensing
Max Installation Altitude	≤ 2000 m a.s.l.
Audible Noise	< 65 dB (A) at 1 m

Mechanical Characteristics

Cabinet	Free standing, floor mounting, steel sheet (15-20/10 sheet thickness)
Cooling method	Fan assisted (temperature-controlled)
Access	Front door
Cable entry	From bottom
Degree of protection	IP21
Painting / Colour	Epoxy-polyester thermosetting powder coating / RAL 7035
Dimensions & Weights	See the table below

Standards

Quality	ISO 9001 - 2008
CE Conformity	Yes
Safety	IEC EN 60950
EMC	IEC EN 61000-6-2, 61000-6-4
Semiconductor Convertors	IEC EN 60146-1-1, 60146-1-3, 60146-2

Subject to change without notice

Dimensions (WxDxH, mm)			
Weights (kg approx)			
	Amps		
DC Volt Nom	50	100	150
24	600x600x1100	600x600x1100	600x600x1100
	140	155	180
48	600x600x1100	600x600x1300	600x600x1300
	150	210	220
110	600x600x1300	600x600x1300	600x600x1500
	205	230	295
220	600x600x1300	600x600x1500	600x600x1500
	235	325	375



MADE IN ITALY

Teletecnica s.r.l.
 Loc. Ponte Romano, 6
 06028 Sigillo (PG) – Italia
 Tel. +39 (0)75 9178005
 Fax +39 (0)75 9178006
 Email info@teletecnicaweb.it
 Web www.teletecnicaweb.it